



GNEE STEEL GROUP



YOUR RELIABLE SOURCE FOR STEEL!

Welcome to Gnee-Steel

About GNEE STEEL GROUP

We are experts in the supplying of materials to meet the individual requirements of a project, regardless of size, scope or difficulty. As a specialized supplier of highly qualified products such as Seamless/Welded Pipe and Tube, Plate and Equipment for industries such as Pressure Vessel, Heat Exchanger. We mainly service for industry of Oil & Gas, Petrochemical, Power Generation, Onshore & Offshore and other industry and energy field over the world.

The services and support we provide are tailored to the needs of a particular customer and project, and are driven by in-depth knowledge of the products, and we are aware of the importance of high quality, on-time delivery and the pressures of meeting fabrication schedules, and also the importance of accurate and up-to-date reporting.

Since our establishment, we have been servicing our customers and the projects in Canada, South America, Southeast Asia, Central Asia, Middle East, South Africa, North Africa and North Europe market.

We keep pace with your project, as well as speed up your project. GNEE are committed to be your reliable source for steel .

YOUR RELIABLE SOURCE FOR STEEL!

MENU

01 Hot Rolled Steel Stainless Steel And Aluminum Steel

02 Seamless Pipe And Erw Pipe

03 Cold Steel Coil And Galvanized Steel PPGI

04 Section Steel

05 Machining And Process

06 Engineering Project





Cor-ten A/B Steel Coil And Plate

Cor-ten steel is weathering steel , this material is a corrosion resistant steel,that left Uncoated develops an outer layer patina. This patina protects the steel from additional Corrosion. It is a high strength steel alloy and it is used where higher strength and longer Life cycle material are desired.Especially in situations where untreated alloys are desired. A lot of trains,bridges container buildings will be used in this weather resistant steel to the Company to save costs,reduce corrosion losses.

For Size:

Thickness: 0.6mm--100mm

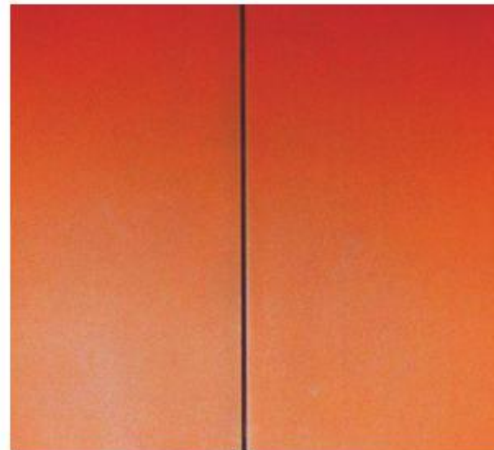
Width: 30mm--4000mm

Length: 1000mm-12000mm

Specification : ASTM EN10025 JIS GB



CORTEN A/B STEEL PLATE



SPA-H Steel Plate



A588GR B STEEL PLATE



Q355GNH steel



S355J0W cutting



Material

Material	Size		standard	
	Coil	plate		
S235J0W	0.6-14*1000-2000	6-100*2000-4000	EN10025	
S235J2W	0.6-14*1000-2000	6-100*2000-4000	EN10025	
S355J0W	0.6-14*1000-2000	6-100*2000-4000	EN10025	
S355J2W	0.6-14*1000-2000	6-100*2000-4000	EN10025	
S355K2W	0.6-14*1000-2000	6-100*2000-4000	EN10025	
COR-TEN A	0.6-14*1000-2000	6-100*2000-4000	ASTM	
COR-TEN B	0.6-14*1000-2000	6-100*2000-4000	ASTM	
A588GR A	0.6-14*1000-2000	6-100*2000-4000	ASTM	
A588GR B	0.6-14*1000-2000	6-100*2000-4000	ASTM	
A588GR C	0.6-14*1000-2000	6-100*2000-4000	ASTM	
A588GR K	0.6-14*1000-2000	6-100*2000-4000	ASTM	
ASTM A606M	0.6-14*1000-2000	6-100*2000-4000	ASTM	
A871M GR 60	0.6-14*1000-2000	6-100*2000-4000	ASTM	
A709 GR 50W	0.6-14*1000-2000	6-100*2000-4000	ASTM	
A242 TYPE1	0.6-14*1000-2000	6-100*2000-4000	ASTM	
Q345GNH	0.6-14*1000-2000	6-100*2000-4000	GB	
09CUPCRNI-A	0.6-14*1000-2000	6-100*2000-4000	GB	
Q480NQR1	0.6-14*1000-2000	6-100*2000-4000	GB	
SPA-H	0.6-14*1000-2000	6-100*2000-4000	JIS G3125	

OUR PARTNER MILL : BAO STEEL/ANGANG GROUP/ AN STEEL/HBIS XIN STEEL/TANG STEEL/RI ZHAO STEEL .



Plate For Boilers And Pressure Vessels



Application: Widely used in petroleum, chemical industry, power plants, boilers and other fields, such as to produce reactors, heat exchangers, separators, spherical tank, oil tank, LPG tanks, nuclear reactor pressure shell, boiler drum, liquefied petroleum gas cylinders, hydro power high-pressure pipes, turbine cortex shells and other equipment and components, etc.

For Size:

Thickness: 3mm--200mm

Width: 30mm--4000mm

Length: 1000mm--12000mm

Specification: ASTM EN10025 JIS GB DIN



Material

STEEL GRADE	EXECUTIVE STANDARD
20G 16MnG 15CrMoG 19MnG 13MnNiCrMoNbG	GB713-97
15MnNbR 15MnVNR Q245R Q345R Q370R	GB6654-96
16MnDR 09MnNiDR 15MnNiDR 12MnNiVR 14Cr1MoR	GB3531
SB410 SB450 SB480	JIS G 3103
SPV235 SPV355 SPV420 SPV450 SPV490	JIS G 3115
SGV410 SGV450 SGV480	JIS G 3118
ASTM A299M A662M(A B C) A515 GR 55 60 65 70	ASTM ASME
A516 GR 55 60 65 70 A204 GR B C A387GR 11CL11	
A387 GR 11 CL22 A387 GR 22 CL22 A537 CL 1 A537 CL2	
A517 GR B A573 GR 70 A302M	
P235GH P355GH P295GH 16Mo3	EN10028-2

OUR PARTNER MILL:

BAO STEEL/ ANGANG GROUP/AN STEEL/HBIS/XIN STEEL/TANG STEEL/RI ZHAO

STEEL/TISCO/NASCO/



Abrasion Resistant Steel Plate

Wear resistant steel plate has high wear resistance and good impact performance. It can be cut, bending, welding and so on. It can be connected with other structures such as welding, plug welding and bolt connection. It has the characteristics of time saving and convenience in the process of maintenance. It is widely used in metallurgy, coal, cement, electric power and glass. Mine, building materials, brick and tile and other industries.

For size:

Thickness: 3mm--80mm

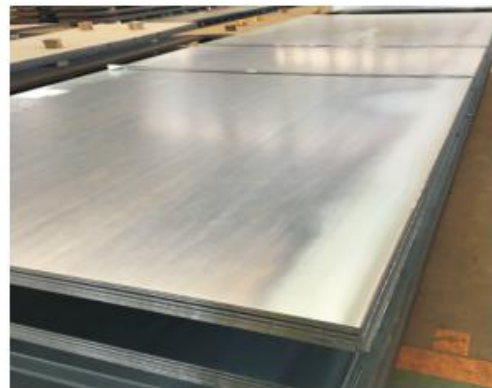
Width: 30mm--4000mm

Length: 1000mm-12000mm

Specification : GB HARDOX XAR JFE FORA



material	SIZE	stanterd	
NM360 NM400 NM450 NM500	3-80MM*1250-4000		
HARDOX400 450 500 600	6-50MM*1250-4000		
XAR400 XAR450 XAR500	6-50MM*1250-4000		
FORA400 FORA500	6-50MM*1250-4000		
JFE-EH360 400 500	6-50MM*1250-4000		



OUR PARTNER MILL: BAO STEEL/ AN STEEL/HBIS/XIN STEEL/

XINGCENG STEEL/LIAN STEEL/XIANG STEEL/WUHAN STEEL/



Hot Rolled Steel Plate/High Strength Steel Plate

High Strength Steel Plate

high strength steel plate has high strength, especially in normalizing or normalizing and tempering. It is mainly used for large ships, bridges, power plant equipment, medium and high pressure boilers, high pressure vessels, locomotives, hoisting machinery, mining machinery and other large welding structures.

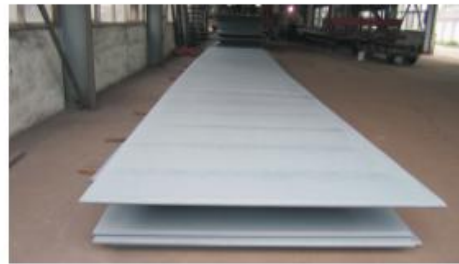
For size:

Thickness: 1.5mm--200mm

Width: 30mm--4000mm

Length: 1000mm-12000mm

Specification : GB EN JIS DIN



STEEL GRADE	EXECUTIVE STANDARD
Q345(A B C D E) Q390(B C D E) Q420(B C D E) Q460(B C D E)	GB/T1591-2017
Q500(C D E) Q550(C D E) Q690(D E)	GB/16270
SM490(A B C) SM490YA SM520 SM570	JIS G3106
ASTM A572 GR (42 50 55 60 65) A633(A B C D E)	ASTM
S355(JR J0 J2 K2 G2 G3 NL) S420NL S460NL S550NL	EN
E350 E420 E460 E550 E690	ISO4950
FE430 FE510	ISO630



Shipbuilding Steel Plates

We can supply you with shipbuilding plates in following specifications:

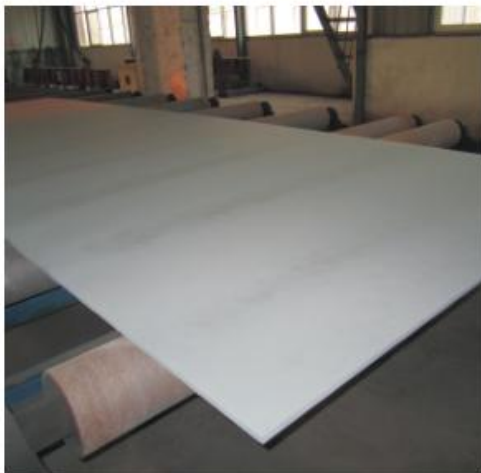
Thickness :3–200mm

Width:1500–4000mm

Length:5000–15000mm

1, Hot rolled medium steel shipbuilding plate Capable Classification Society Quality Authentication from LR, ABS, NK, GL, DNV, BV, KR, RINA, CCS

2, Hot rolled Strength shipbuilding plate A/B AH32 AH36 DH32 DH36 EH32 EH36 AH40 DH40 EH40



OUR PARTNER MILL: BAOSTEEL/ ANGANG GROUP/ PUYANG STEEL/HIBS/TISCO/NASCO/



Carbon Construction Steel And Checkered plate

Application Apply to manufacture all kinds of steel riveting,plug, welding for structural parts.

For Size:

Thickness: 1.5mm--200mm

Width: 30mm--4000mm

Length: 1000mm-12000mm

Specification : GB EN JIS DIN ASTM

STEEL GRADE	EXECUTIVE STANDARD
Q235 B C D	GB3274-2010
S235JR J0 J2	EN10025
SS400 SM400 12MN	JIS G3101
ST37-2	DIN17100
A36 A283 GR C D 1010-1045	ASTM
FE360(A B C D)	ISO630
E250 E350	

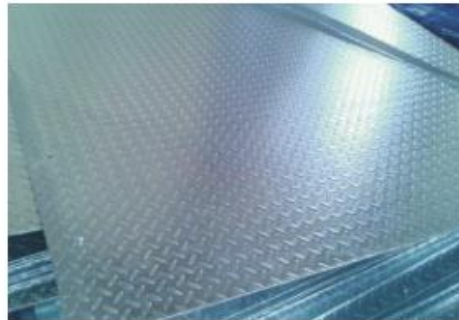
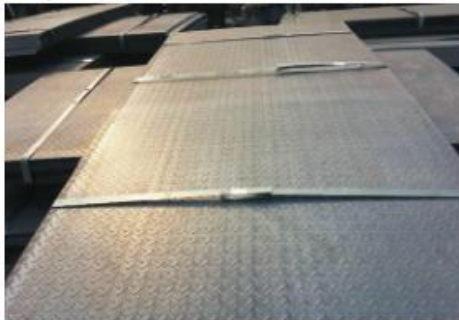
Checkered Plate

For Size:

Thickness: 0.5mm--14mm

Width: 30mm--1500mm

Length: 1000mm-12000mm





Stainless Steel Plate

Material Spec:

Size Ranges: 0.5MM-100MM*1000-2000*L

Material: Stainless Steel plate

Standards: ASTM/JIS/GB/DIN/AISI

Materials: 201, 410, 420, 430, 304L, 309, 310, 316L, 316ti, 321, 904L。

Length: 6m or other length based on demand

Packing: In bundle, fastened by wire rods with two metal tags be attached



Aluminum Plate

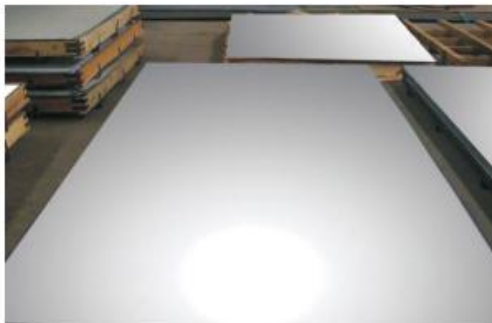
Size Ranges: 0.5MM-100MM*1000-2000*L

Material: Aluminum plate

Standards: GB

Materials: 1050, 1060, 1100, 3003, 3004, 3005, 3104, 5052, 5083, 5005,
5A05, 5086, 6061, 6063, 6060

Length: 6m or other length based on demand



OUR PARTNER MILL: BAO STEEL/ AN STEEL/HBIS/TISCO/



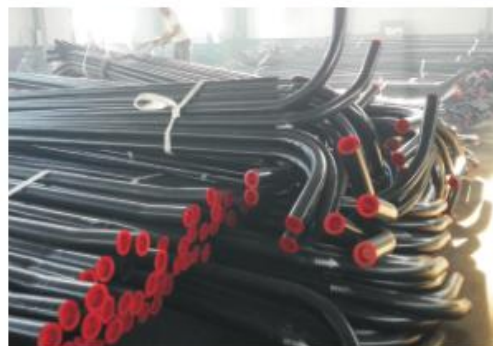
SMLS STEEL PIPE

Outer Diameter: 10.3–812.8mm

Wall Thickness: 1.5–45mm

Specification: API 5L PSL1/PSL2, ASTM A106 ASTM A179, ASTM A192, ASTM A333–A336,
EN10210, DIN1629 8162 8163 20G

Length: 6m, 9m, or other length based on demand



OUR PARTNER MILL: BAO STEEL/TPCO/LUXING/JUNENG/HUALING/



Pipe Fittings And Elbow



Pipe Fittings And Elbow

Material Spec:

Standards:Carbon: ASTM/ASME A234 WPB, WPC

Alloy: ASTM/ASME A234 WP 1-WP 12-WP 11-WP 22-WP 5-WP 91-WP911,
15Mo3 15CrMoV, 35CrMoV

Stainless:ASTM/ASME A403 WP 304-304L-304H-304LN-304N

ASTM/ASME A403 WP 316-316L-316H-316LN-316N-316Ti

ASTM/ASME A403 WP 321-321H ASTM/ASME A403 WP 347-347H





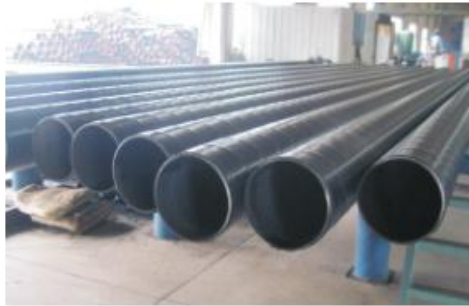
Welded Steel Pipe/ SSAW Pipe And LSAW Pipe

SSAW PIPE

Outer Diameter: 219–1820mm

Wall Thickness: 5–25.4mm

Specification: Q235 Q345 API 5L PSL1/PSL2 ASTM A53 ASTM A252 ASTM A572 En10219



LSAW PIPE

Outer Diameter: 219–1820mm

Wall Thickness: 5–25.4mm

Specification: Q235 Q345 API 5L PSL1/PSL2 ASTM A53 ASTM A252 ASTM A572 EN10219



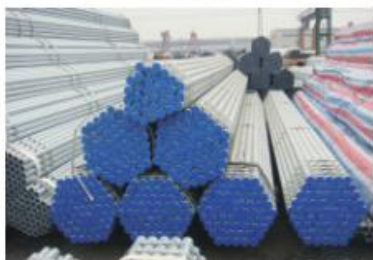


ERW PIPE

Outer Diameter: 21.3–660mm

Wall Thickness: 0.5–20mm

Specification: Q235 Q345 API 5L PSL1/PSL2 ASTM A53 ASTM A252 ASTM A572 EN10219

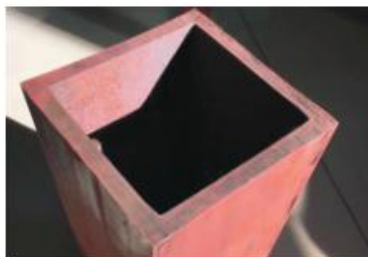


Square Hollow Section

Outer Diameter: 15*15mm---500*500mm

Wall Thickness: 0.5–30mm

Specification: Q235 Q345 ASTM A500 ASTM A572 EN10219 SS400 .





Rectangular Hollow Section

Outer Diameter: 10*20mm---500*250mm

Wall Thickness: 0.5-30mm

Specification: Q235 Q345 ASTM A500 ASTM A572 EN10219 SS400 .

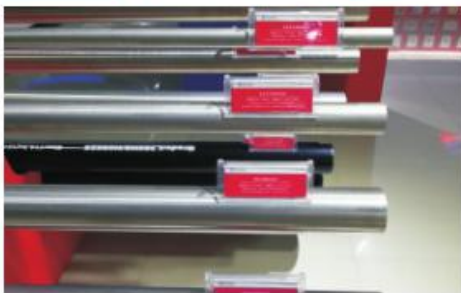


SPECIAL PIPE





STAINLESS SEAMLESS PIPE



STAINLESS WELDED PIPE

Outer Diameter:10.3–1820mm

Wall Thickness:0.5–30mm

Specification: 201 410 420 430 304 316 310

Length:6m.9m.or other length based on demand





Hot Dip Galvanized Coil And Watts

Galvanized steel coil is a special type of steel coil used in a number of different applications within fabrication and manufacturing environments. Steel coil of any kind is flat stock that is thin enough to be rolled into a coil or wound into a continuous roll. It is also able to be rolled out flat and cut at any length or shape needed. Having the steel coil galvanized helps the user by allowing it to be applied in outdoor fabrication projects.

Material Spec:

Size Ranges: 0.2MM-40MM*750MM-1500MM*C

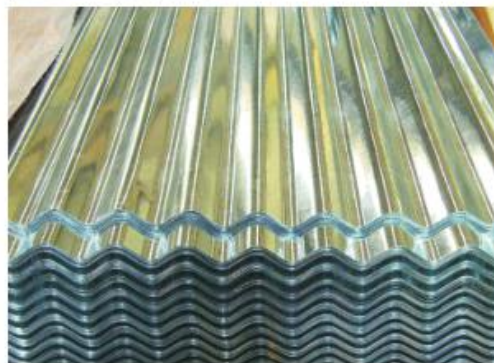
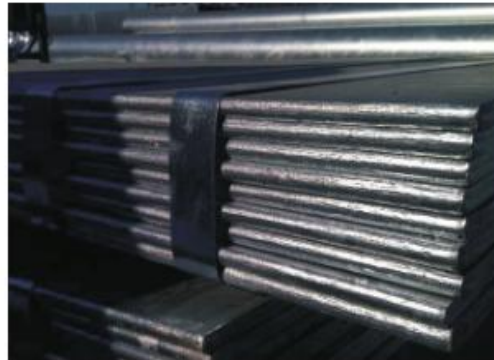
Material: Galvanized steel coil and plate

Standards: ASTM/JIS/GB/DIN

Materials: DX51D-Z A653 SGCC SECC DX52D-Z

Length: 2.44m, 3.048m, or other length based on demand

Packaging: Seaworthy packing





Cold Steel/Cold Steel Coil And Sheet

The cold-rolled steel coil has many applications, such as automobile manufacturing, electric products, locomotive and vehicle, aviation, precision instruments, food cans and so on.

Material Spec:

Size Ranges: 0.2MM-3.0MM*750MM-1500MM*C

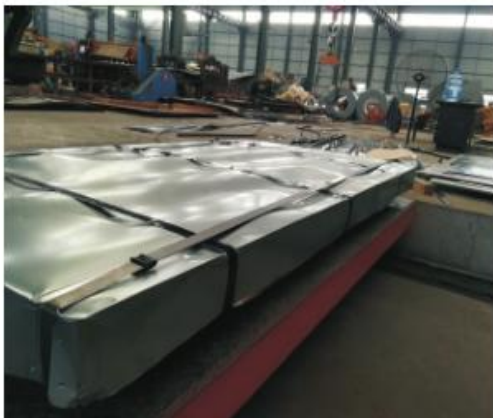
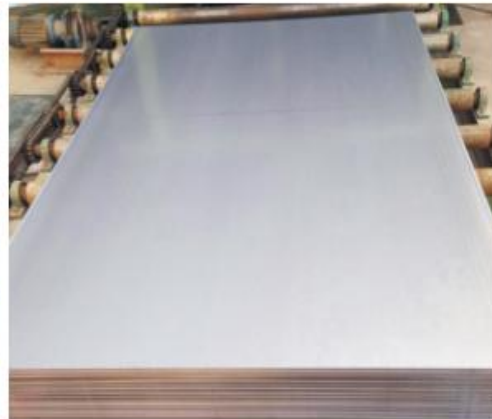
Material: Cold steel coil and sheet

Standards: ASTM/JIS/GB/DIN

Materials: DC01-DC06/SPCC-SPCF/ST12-ST16/08F/Q195/

Length: 2.44m, 3.048m, or other length based on demand

Packaging: Seaworthy packing



OUR PARTNER MILL : BAO STEEL/ANGANG GROUP/AN STEEL/ HBIS/XIN STEEL/TANG STEEL/RIZHAO STEEL/SHOU GANG/TISCO



PPGI

PPGI is pre-painted galvanised iron, also known as pre-coated steel, coil coated steel, color coated steel etc., typically with a hot dip zinc coated steel substrate.

The hot dip metallic coating process is also used to manufacture steel sheet and coil with coatings of aluminium, or alloy coatings of zinc/aluminium, zinc/iron and zinc/aluminium/magnesium which may also be factory pre-painted. While GI may sometimes be used as a collective term for various hot dip metallic coated steels, it more precisely refers only to zinc coated steel. Similarly, PPGI may sometimes be used as a general term for a range of metallic coated steels that have been pre-painted, but more often refers more precisely to pre-painted zinc coated steel.

Material Spec:

Specifications:

Size Ranges: 0.2MM–2.0MM*750MM–1500MM*C

Material: PPGI steel coil and plate

Standards: ASTM/JIS/GB/DIN

Materials: DX51D-Z A653 SGCC SECC DX52D-Z

Length: 2.44m, 3.048m, or other length based on demand

Packaging: Seaworthy packing





1 、 Angle Bar

Used for general structural purposes, for use in riveted, bolted, or welded construction of buildings, bridges, machinery, etc. Used for booms, rails, braces, frames, brackets, cross-members, liners, truck trailers, truck beds, racks, etc.

Material Spec:

Size Ranges: 25 x 25 x 3 to 200 x 200 x 25 mm

As per IS2062:2006 (E250, E350 Grade)/ IS808

ISA – Indian standard equal angles

Material: Mild Steel

Brand: Imported, SKS, MSP Gold

Standards: ASTM/JIS/GB/DIN/AISI

Product name: angle bar

Materials: Q235B/Q345B/SS400/S235/S355/ST37/ST52/E250/E350

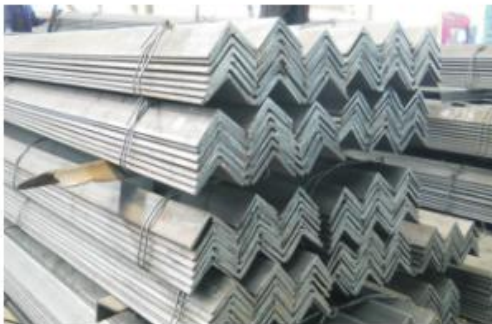
Alloy type: A588/CORTEN/304/316L/

Thickness: 3–25mm

Length: 6m, 9m, 12m or other length based on demand

Surface painted, galvanized

Packing: In bundle, fastened by wire rods with two metal tags be attached





2、 Steel Channel

Steel channel is a hot-rolled carbon steel channel shape. Constructed using a vertical web and top and bottom horizontal flanges with inside radius corners, it is available in a wide range of sizes and thicknesses. The shape provides superior structural support, making it an ideal product for frames and braces used for machinery, enclosure, vehicle, building and structural support applications.

Material Spec:

Specifications:

Size Ranges: 5#--40#

Material: Mild Steel

Brand: Imported, SKS, MSP Gold

Standards: ASTM/JIS/GB/DIN/AISI

Product name: Channel bar

Materials: Q235B/Q345B/SS400/S235/S355/ST37/ST52/E250/E350

Alloy type: A588/CORTEN/304/316L/

Thickness: 3-14.5mm

Length: 6m, 9m, 12m or other length based on demand

Surface painted, galvanized



Packing: In bundle, fastened by wire rods with two metal tags be attached

3、 H-Beam

Product Name	Hot Rolled Structural Steel H Beam
Grade	Q235 Q345 ,S235 S355 SS400 SM490 A572 GR 50 ST52
Standard	JIS,ASTM,GB DIN EN
Technique	Hot Rolled/Welded
Appilication	H Beam steel used for the plant,the bridge,shipment building,high rise building construction,lifting and transportation machinery,equipment manufacturing base building the support ,foundation pile manufacturing etc.

Size Ranges: 100*100-900*300





4 、 Round Steel Bar

Round steel can be divided into three kinds: hot rolling, forging and cold drawing. Hot rolled round steel specifications for 5.5–250 mm. Among them: 5.5–25 mm of small round steel bars in most of the supply, often used as reinforcement, bolts and various mechanical parts; greater than 25 mm round steel

Steel material: Q195, Q235, 10#, 20#, 35#, 45#, Q215, Q235, Q345, 12Cr1Mov, 15CrMo, 304, 316, 20Cr, 40Cr, 20CrMo, 35CrMo, 42CrMo, 40CrNiMo, GCr15, 65Mn, 50Mn, 50Cr, 3Cr2W8V, 20CrMnTi, 5CrMnMo etc.

Standard: (GB699–1988, GB700–1988, GB3077–1988, GB702–1986, QJ/HG02.17–1991), the following table for round steel detailed standards:

Texture of material	T specifications	Texture of material	Specifications
8#–10#	φ 16–290	65Mn	φ 40–300
15#	φ 14–150	45Mn2	φ 18–75
20#	φ 8–480	60Si2Mn	φ 16–150
35#	φ 8–480	20CrMnTi	φ 10–480
45#	φ 6.5–480	20crmnTiB	φ 16–75
Q235B	φ 6.5–180	GCr15	φ 16–400
40Cr	φ 8–480	ML35	φ 8–150
20Cr	φ 10–480	T8–T13	φ 8–480
42CrMo	φ 12–480	Cr12	φ 16–300
35CrMo	φ 12–480	Cr12MoV	φ 16–300
20CrMo	φ 12–300	3Cr2W8V	φ 16–300
38CrMoAL	φ 20–300	45Cr50Cr	φ 20–300
5CrMnMo	φ 20–450	20CrMnMo	φ 20–300
16Mn (Q345B)	φ 14–365	40Mn2	φ 28–60
50Mn	φ 40–200	35Cr	φ 55
15CrMo	φ 21 φ 24 φ 75	15Mn	φ 32 φ 170
25#	φ 16–280	40CrMnMo	φ 80– φ 160
YF45MnV	φ 28–80	20CrMnMo	φ 20–300
30#	φ 6.5–480	27 SiMn	φ 20–350
30Crmo	φ 28	Crwmn	φ 20–300
30CrmnTi	φ 16–300	H13(4Cr5MoSiVi)	φ 20–300
60#	φ 210. φ 260	40crNimo	φ 20–400



Section Steel/ Round Steel Bar

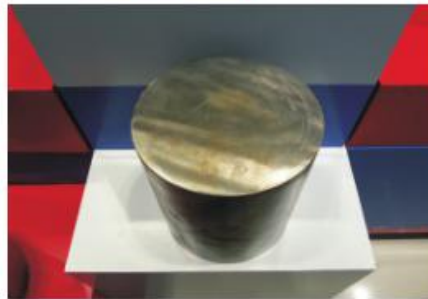
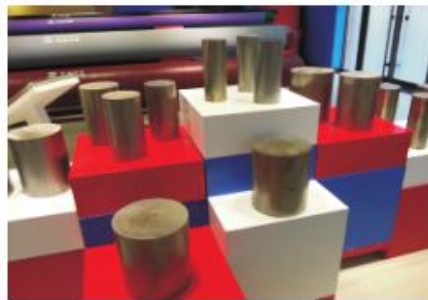
Mainly used in manufacturing machine

Stainless steel round bar

Mechanical parts, seamless steel tube, etc.

Processing such as forging, welding and cutting, commonly used in the manufacture of chains, rivets, bolts, shafts, etc..

Make all kinds of tools, cutting tools, moulds and tools





5、 Flat Bar

Material Spec:

Size Ranges: 25 x 3 to 500 x 25 mm

Material: Mild Steel

Standards: ASTM/JIS/GB/DIN/AISI

Product name: Flat bar

Materials: Q235B/Q345B/SS400/S235/S355/ST37/ST52/E250/E350

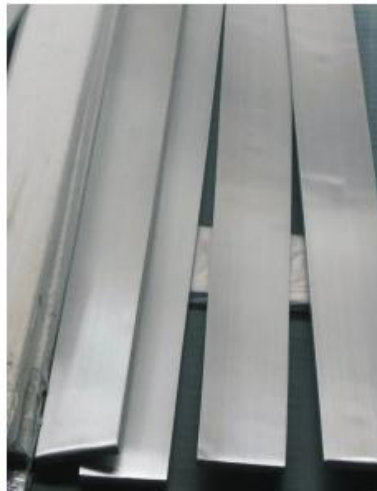
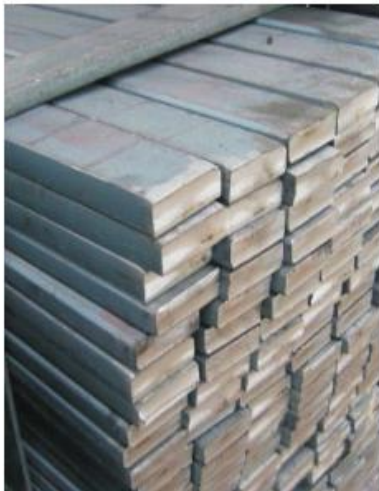
Alloy type: A588/CORTEN/304/316L/

Thickness: 3–25mm

Length: 6m or other length based on demand

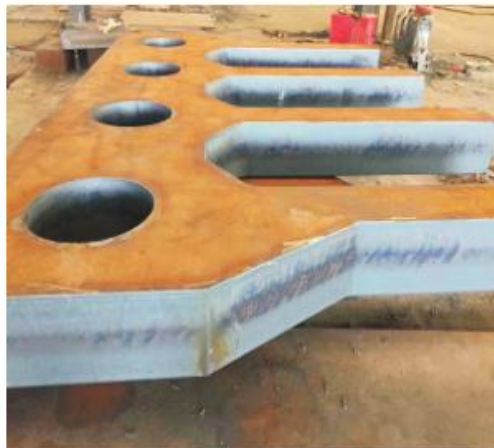
Surface painted, galvanized

Packing: In bundle, fastened by wire rods with two metal tags be attached



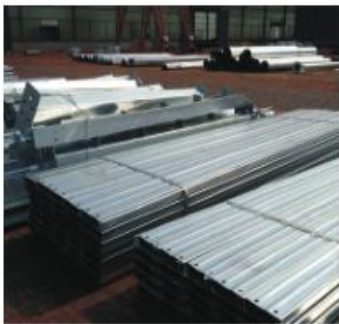
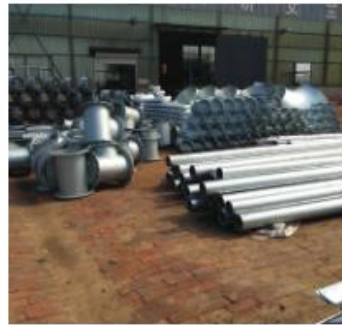
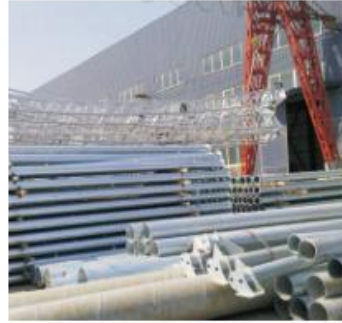


1、Cutting Rolling And Welding





2、 Hot Dip Galvanized





3、packaging





1、 Engineering Project



2、 Landscape Project







格尼（天津）国际贸易有限公司
GNEE(TIANJIN)MULTINATIONAL TRADE CO.,LTD



GNEE STEEL GROUP
GNEE(TIANJIN)MULTINATIONAL TRADE CO.,LTD
TIANJIN ADDRESS: NO4-1114, BEICHEN BUILDING TIANJIN,CHINA.
HEAD ADDRESS: 1018-1021 WANDAN CENTER ANYANG HENAN CHINA
TEL:(86)372 5055135
FAX:(86)372 5055134
EMAIL: info@gescosteel.com
Website:www.gneesteel.com www.gneesteels.com
www.gescosteel.com www.gneemetal.com
gneesteel.en.alibaba.com